



*Take a closer look
at Hawke's Bay*

GREAT THINGS
GROW HERE™
HAWKE'S BAY NEW ZEALAND



Contents

A Regional Overview.....	03	Districts of Hawke's Bay	
Hawke's Bay Life.....	05	Wairoa.....	16
Getting Around		Napier	21
Travel Times	07	Hastings.....	25
Land, Sea, Air	08	Central Hawke's Bay.....	28
Our Workforce.....	10	Case Studies	
Utilities	11	Quality Roding and Services	32
A Local Network	12	Beauty Antix	34
		Now NZ Ltd.	37
		Kiwibank	39
		New Zealand Frost Fans Ltd.....	41
		Kanapu Hemp.....	42
		Useful Contacts	44



Welcome to Hawke's Bay

Hawke's Bay is a large, diverse region providing an abundance of opportunities for investment, industry and individuals to thrive.

We are a region where everything is possible. Live in your choice of urban, rural, lifestyle or coastal settings while finding opportunities in agriculture, horticulture, technology, healthcare and much more.

The Hawke's Bay offering has attracted high-profile businesses and individuals including Xero, Kiwibank and Heinz Wattie's. The warm, dry climate, the food, wine, architecture and extraordinary environment make us popular with visiting Kiwis, tourists and locals alike.

Easy connections to Hawke's Bay via road, rail, sky, sea and fibre make our region hum and a place for individuals and business to prosper.

Hawke's Bay – a place to thrive

The vast Hawke's Bay area includes Wairoa, Napier, Hastings and Central Hawke's Bay and each has its own unique offerings including several smaller urban areas including Havelock North, Waipukurau and Taradale and a myriad of smaller coastal settlements.

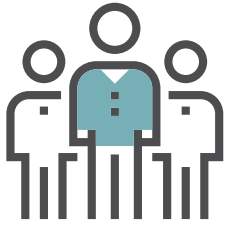
Primary production and industry support services are the backbone of our regional economy. However, the opportunities for work-life balance, headspace, a highly-skilled talent pool and a thriving economy mean increased prospects in technology, robotics, healthcare and professional services. Combine this with a connected business support network and Hawke's Bay is the ideal petri-dish for growing businesses.

Away from work, options to relax include a wide range of award-winning wineries including the iconic Craggy Range and Church Road; golfing at the prestigious Cape Kidnappers or numerous options; walks and mountain biking around the stunning Te Mata Peak or along the coast, as well as a superb network of cycle trails.

Central Hawke's Bay has lovely beaches and historic homesteads, while Wairoa places you at the gateway to the Māhia Peninsula, Lake Waikaremoana and the wilderness of Te Urewera.



A Regional Overview



181,500

POPULATION 2021

♂ 49%

MALE

♀ 51%

FEMALE



80.5%

SCHOOL LEAVERS
ATTAINED NCEA
LEVEL 2 OR ABOVE
In 2020

125

SCHOOLS



19,737

BUSINESSES 2021



87,405

FILLED JOBS 2021



111,430

WORKING AGE
POPULATION (15-64)
61.4% of total population
in 2021



3.1%

ANNUAL AVERAGE
UNEMPLOYMENT
RATE

March 2022

\$101,244

MEAN ANNUAL
HOUSEHOLD INCOME
For 2021



\$484

AVERAGE WEEKLY RENT
Year to March 2022

\$851,674

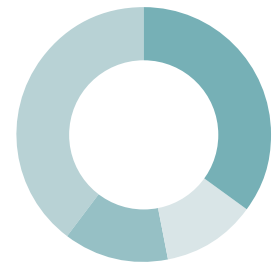
AVERAGE HOUSE VALUE
Year to March 2022



AGE DISTRIBUTION 2021

● 0 - 14 19.9%
● 15 - 24 11.5%
● 25 - 64 49.9%
● 65+ 18.8%

EMPLOYMENT BY SKILL
LEVEL 2021



● HIGHLY SKILLED - 35.2%
(Degree or higher. Level 1 ANZSCO)
● SKILLED - 11.9%
(Registered Diploma. Level 2 ANZSCO)
● SEMI SKILLED - 13.2%
(Tertiary Certificate. Level 3 ANZSCO)
● LOW SKILLED - 39.7%
(NCEA 2 or 3. Level 3/4 ANZSCO)



Hawke's Bay Life

Enjoy a lifestyle that brings happy, relaxed days with plenty of opportunities.

Lifestyle

Hawke's Bay delivers a great lifestyle that is better for your health, for family life and for whatever you like doing when the work day is done.

Long hot summers (October to March) and mild winters make Hawke's Bay a great place for people who love the outdoors.

Hawke's Bay presents a smorgasbord of beautiful scenery, outstanding rivers and beaches, award winning wines, gourmet experiences, family fun, unique wildlife, stunning architecture, rich cultural heritage, and outdoor adventure.

New Zealanders love their sport and we are no exception. The region has a diverse range of sporting facilities and outdoor sports fields including McLean Park and Mitre 10 Park Hawke's Bay which has exceptional facilities across many sporting codes, including a Regional Aquatic Centre, with plans for further development, attracting 320,000 users per year. There are museums and art galleries, New Zealand's oldest Farmers' Market, world class golf courses, as well as beaches for swimming, surfing and boating, and kilometres of cycle trails.

Education

Parents want to give the best to their children, and an excellent education is perhaps the greatest gift of all. Hawke's Bay has 125 schools including some of the highest achieving in New Zealand. Highly regarded integrated schools for girls in years 7-13 are Iona College and Woodford House.

For the boys, Lindisfarne College (integrated) caters for boys in years 7-13. Hereworth School (independent) specialises in primary and intermediate education. These schools offer the choice of day student or boarding. The region also has an excellent range of public schools and pre-school learning centres. It is safe and easy to get to school each day with students walking, cycling or taking a short bus ride.

Getting Around

Public transport is so important to the local economy and social wellbeing of our people. Bus services in and around Hastings, Flaxmere, Havelock North, Taradale and Napier are managed by Hawke's Bay Regional Council and operated by **GoBus**. Our region is connected with over 100km of cycleways (iWAY) which encourage easy and safer urban cycle use. Wairoa and CHB can be connected via the intercity bus.

Healthcare

Hawke's Bay's public hospital in Hastings is complemented by private hospitals and a comprehensive range of private surgical facilities and consultants. The health care and social assistance industry is one of the largest employment opportunities in the region providing excellent health services, and working in partnership to improve the health and wellbeing of our people.

For more information visit [Our Health Hawke's Bay](#).

Visitors and Events

Something for everyone, any time of the year. Hawke's Bay attracts a range of large scale events from sport and recreation, to music, food and wine throughout the year. Key events in the annual calendar include Horse of the Year, Art Deco, F.A.W.C.I, Hawke's Bay Marathon, Wairoa Māori Film Festival, East Coast Farming Expo, and outdoor cinema and concerts.

Toitū Hawke's Bay Arts & Events Centre and Napier's Municipal Theatre host a programme of arts, culture and events appealing to a wide range of audiences, while wineries and luxury accommodation provide further drawcards.



Getting Around



Travel Times



Drive times Hawke's Bay Airport to:

Wairoa	1 hour 30 minutes
Napier	10 minutes
Hastings	20 minutes
Waipukurau	45 minutes
Gisborne	3 hours

Land

Road and rail keep things moving and connect your business easily to the rest of the country. State Highway 2 brings traffic from the south and heads on up to Gisborne. State Highway 5 connects Hawke's Bay with Taupo and further north to Auckland.

Locally, the Hawke's Bay Expressway keeps traffic moving around the region, to the Airport, and provides easy access to the Port. The main rail link from Palmerston North to Napier Port traverses Central Hawke's Bay, through Hastings to Napier.

Air

Hawke's Bay Airport is the third busiest airport in the North Island and provides an essential role in connecting the Hawke's Bay region's people and produce with the wider national and international economy.

A few key facts about Hawke's Bay Airport are:

2021/22 more than 380,000 passengers through the gate. Pre COVID passengers numbers were 750,000 in 2018/19

1 Million passengers projected by 2030

Daily direct flights with Air New Zealand to Auckland, Wellington and Christchurch. Regional connections with Originair include Nelson, Hamilton and Palmerston North

Approximately 24,000 aircraft movements a year

Runway is 1750m long

Easy transport links to Napier city, Hastings and Havelock North

Hawke's Bay Airport's new terminal opened in August 2021 which has been future-proofed to service 1 million passengers per year

Solar Farm project planned for completion in 2025

Achieved level 2 Carbon Accreditation in 2021 with a Net Zero target by 2030

As well as being the gateway to the region for travellers; Hawke's Bay Airport is a prosperous commercial hub. 18 businesses are located at the airport, with more than 270 employees working on-site. Plans to establish the Ahuriri Business Park on some of the 230ha of land at the airport are underway, this will support the region's growth and turn the airport into a hub for business and travel.

Sea

Napier Port is the premier freight gateway for Hawke's Bay and New Zealand's lower North Island, connecting our businesses, our people and our communities to the world. One of New Zealand's largest container terminals, millions of tonnes of cargo flow across the Port's wharves into and out of the region each year.

The new 6 Wharf, will future proof the port, enable more and larger ships, and support economic growth for the region.



Napier Port Key Figures



3.95
MILLION TONNES
OF BULK CARGO HANDLED



276,000
TEU CONTAINERS
HANDLED



45,000
TEU HANDLED THROUGH
PORT PACK



5.9
MILLION TONNES OF TOTAL
CARGO VOLUME HANDLED



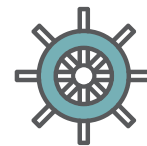
EXPORT PRODUCT MIX FY2021
(WEIGHT)

Logs	63%
Woodpulp	9%
Pip Fruit	6%
Timber	5%
Meat	5%
Fresh Produce	3%
Other	9%



FY2021
ALL CARGO IMPORTS
(WEIGHT)

Fertiliser	35%
Oil products	30%
General Cargo	15%
Foodstuffs	8%
Cement	5%
Other	7%



343
CHARTER
VESSEL CALLS



242
CONTAINER
VESSEL CALLS



5
EXISTING WHARVES
PROVIDING
6 COMMERCIAL BERTHS
& NEW 350M WHARF



50
HECTARES OF
ON-SITE PORT LAND



INLAND FREIGHT HUB IN
MANAWATŪ WITH A 1.9 HECTARE
CONTAINER YARD AND A
WAREHOUSING FACILITY WITH
ROAD AND RAIL CONNECTIONS
TO NAPIER PORT

Our Workforce

With access to a working age population of just under 110,000 people from across Hawke's Bay, you've got choices when it comes to staff.

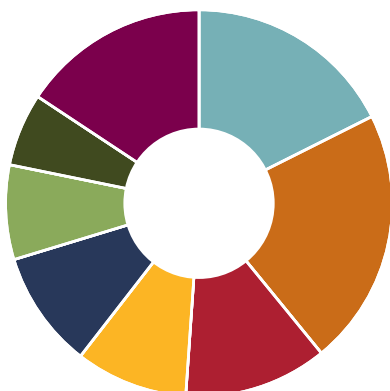
Our diverse, skilled and stable workforce positions your business to take advantage of a strong regional economy with the numbers and diversity to support larger scale employers. Over a third of the working age population is degree qualified (or higher).

Still can't find who you need? Attracting talented staff to Hawke's Bay, particularly those with families, is relatively easy with a broad range of career, study and lifestyle options to suit all tastes. We also present opportunities to help you create your own workforce via tailored, work-ready programmes delivered through Te Pūkenga, Eastern Institute of Technology (EIT) generating a ready stream of employee candidates.



Hawke's Bay Employment by Industry 2021

	Agriculture, Forestry and Fishing	13.4%
	Manufacturing	12.0%
	Health Care and Social Assistance	11.4%
	Construction	8.7%
	Retail Trade	8.7%
	Education and Training	7.4%
	Professional, Scientific and Technical Services	5.7%
	Accommodation and Food Services	5.7%
	Administrative and Support Services	5.4%
	All others	21.5%



Hawke's Bay Employment by Occupation 2021

	Managers	17.6%
	Professionals	21.5%
	Technicians and trades workers	12.0%
	Community, personal service workers	9.4%
	Clerical and administrative workers	9.8%
	Sales workers	7.9%
	Machinery operators and drivers	6.1%
	Labourers	15.7%



Hawke's Bay Top 10 Qualifications in Demand 2021

FIELD OF STUDY LEVEL	EMPLOYMENT
Management and Commerce Certificate (level 1-3)	7,252
Engineering and Related Technologies Certificate (level 1-3)	6,793
Management and Commerce Degree (level 7+)	5,019
Engineering and Related Technologies Certificate (level 4)	4,637
Society and Culture Certificate (level 1-3)	4,620
Health Degree (level 7+)	4,550
Education Degree (level 7+)	4,090
Society and Culture Degree (level 7+)	3,923
Architecture and Building Certificate (level 4)	3,150
Food, Hospitality and Personal Services Certificate (level 1-3)	2,980



Utilities

Hawke's Bay has the infrastructure in place that will scale up with your business which we know is essential to success.

Electricity

Hawke's Bay's electricity distributor, **Unison Networks**, assures reliability through their world class network deploying the latest technology further backed by ISO 55001 certification – that's total commitment to operational efficiencies. The robust distribution network, has supplies transmitted from north and south generation sources. Unison can work directly with your business to scope and develop a tailored electricity supply solution.

Gas

Powerco operates, builds and maintains our gas network. They created The Gas Hub to make connecting to natural gas easy. With simple to understand information all in one place and the ability to apply for a connection online, you will be well supported to make energy choices around your needs.

Powerco's business is in lines and pipes, the vital infrastructure that connects homes and businesses with the electricity and gas they need.

Powerco spends millions every year on safety-driven maintenance and network-quality upgrades, ensuring natural gas stays as the incredibly safe and reliable fuel it currently is. Powerco also invests in installing gas pipelines into new subdivisions.

Water

Hawke's Bay has seven major rivers - (from the north) Wairoa, Mōhaka, Esk, Ngaruroro, Tutaekuri, Tukituki, Waipawa as well as the Heretaunga Plains aquifer, a significant natural resource.

Construction Capability

Hawke's Bay is home to a number of large scale, highly diversified, construction companies backed with big experience. They've got the expertise and in-house resources to undertake new build projects to large scale.

Fibre & Telecommunications

Being connected to a high speed network is crucial for your business to do more, in less time. Hawke's Bay has a range of options for high-quality, high speed fibre network delivery.

You'll be in the driver's seat with speed, capacity and control when you engage with one of the telecommunications companies servicing the region. Some are locally owned and operated, some even award winning.

A Local Network

Businesses in Hawke's Bay like to connect. Sharing ideas and experiences provide opportunities for us all to grow. You will have easy access to a range of organisations which are ready and waiting for coffee and a chat to see how they can help your business flourish.

Tangata Whenua Partnership Relationships

Ngāti Kahungunu authority stretches from Paritū and the Wharerāta Ranges in the north to Tūrakirae and Palliser Bay in the south, which through its myriad of hapū and marae gives the tribe and greater tribal region our cultural identity and cultural narratives. Tangata whenua across the region includes multiple entities including but not limited to:

- Ngāti Kahungunu Iwi Incorporated
- Rongomaiwahine Iwi Trust
- Te Iwi O Rākaipaaka Trust
- Te Uru Taumatua
- Waikaremoana Tribal Authority
- Ngāti Kahungunu Wairoa Taiwhenua Incorporated
- Tātau Tātau o Te Wairoa Trust
- Ngāti Pāhauwera Development Trust
- Maungaharuru-Tangitū Trust
- Hineuru Iwi Trust
- Te Taiwhenua o Te Whanganui-a-Orotu
- Mana Ahuriri Trust
- Heretaunga Tamatea Settlement Trust
- Te Taiwhenua o Heretaunga

Hawke's Bay Business Hub - Ahuriri

www.hbbusinesshub.nz

A unique collective of business support agencies and services working collaboratively to support the growth of business in the region, The Hub is the place where business people can gather to learn, share, connect and grow their skills to unleash their business potential.

Business Associations

Our regions have active business associations dedicated to encouraging their retail hubs through support networks and enhancement for their members.

Hastings City Business Association:
www.hastingscity.co.nz

Havelock North Business Association:
www.havelocknorthnz.com/hnba

Napier City Business Inc:
www.napiercbd.co.nz/

Central Hawke's Bay Business Network:
business@chbdc.govt.nz

Hawke's Bay Māori Business Hub

A network of Māori businesses that run workshops and other events to upskill and provide information to support business growth.

[Hawke's Bay Māori Business Hub](#) | [Facebook](#)

Te Pūkenga Eastern Institute of Technology

www.eit.ac.nz

The Eastern Institute of Technology (EIT), one of New Zealand's leading institutes of technology, is our local tertiary education provider offering 150 qualifications from certificate to postgraduate qualifications. EIT is equipped to support your workforce (current and future) as they deliver well-trained workers and creative and critical thinkers to the region. Students gain transferable knowledge and hands-on skills through placements, internships and other opportunities to learn "outside the classroom" through EIT's strong partnerships with local industry.





Districts of Hawke's Bay



Wairoa

Wairoa is an untarnished paradise of natural beauty and outdoor adventures.

The vast district is built on foundations of friendliness and hospitality with a growing population offering a diverse quirkiness through an increase in arts, galleries and bespoke businesses.

More and more people are choosing to live in the rural service town where technology has overcome isolation barriers, the low cost of living and relaxed lifestyle is celebrated and hospitality and manaaki are number one.

In town there is a community centre with swimming facilities, indoor sports and a gymnasium, Destination Playground and a skatebowl. The iconic Gaiety Theatre majestically sits at the eastern end of the Marine Parade featuring new release movies and live entertainment with an old school charm and state-of-the-art technology, which reflects a Wairoa community proud of its history, with eyes fixed on the future.

The Wairoa Museum is centrally located on the town's main street, featuring galleries and exhibitions, and an interactive discovery space. Plus, there is free wifi and a welcoming library that offers a complimentary digital hub to boost connectivity

Wairoa translates to "long water" in Māori and refers to the length of the tranquil river that runs throughout the town and borders the main street. The river attracts water sports enthusiasts from around the country who fish, row, sail, jet boat, ski, or paddle in waka ama on the sparkling awa.

You can experience Wairoa's rich culture and heritage by stretching out on the five-kilometre river walkway/cycleway where sites of historical significance share the stories of Māori and European settlement. The walk starts at the historic Portland Island Lighthouse – in service between 1878 and the mid-1950s, before it was moved to town in 1961 – and finishes at Pilot Hill.

The walkway stretches the length of the town all the way to the rivermouth on the outskirts of the township. This Whakamahi Beach area — where the Wairoa River meets the Pacific Ocean — comprises rugged coastline and wetlands and is enjoyed by visitors and locals alike.

The district is flavoured by the strong cultural influence of Māori heritage that beats at the heart of the community. Māori make up 66 percent of the population. The area has 37 marae, numerous iwi and hosts the annual Wairoa International Māori Film Festival.

A popular holiday destination are the beautiful beaches of the Māhia Peninsula, a bustling summer refuge and a magnet for fishermen, divers, and surfers. It's one of New Zealand's most reliable surfing destinations... and there's always a wave on somewhere. Fishermen can launch boats on either side of the peninsula, providing access to outstanding fishing and diving in almost any weather.

Rocket Lab, the only private orbital launch range in the world, is based at the tip of the Māhia Peninsula. Rocket Lab has established two launch sites which allows for back-to-back launches of its Electron Vehicle from the Māhia Launch Complex 1 site which can be viewed from the Whakaki viewing platform.

Relax at the Mōrere hot springs which are at the entrance to the Mōrere Springs Scenic Reserve.

The pools offer therapeutic, natural, mineral hot springs set within 364 ha of beautiful rainforest and walking tracks among native trees and bird life.

Choose from a 10-minute stroll to challenging two and three-hour hikes through native rainforest.

If you are looking at getting back to nature head to the tranquil and remote Lake Waikaremoana in Te Urewera which features bush walks through native rainforest, waterfalls and trout fishing and the Lake Waikaremoana Great Walk.

For more things to see and do in Wairoa, stop in and talk to the friendly staff at the Wairoa i-SITE or phone 0800 429 537 229 Press 3 or email isitewairoa@wairoadc.govt.nz







Business Opportunities are growing

An increasing number of people are choosing to live in the rural service town where technology has overcome isolation barriers, yet the low cost of living and relaxed lifestyle has been maintained.

Living in Wairoa means popping home for lunch, no traffic jams, watersport adventures after work, and – all at a minimal cost.

There are a range of specialist jobs offering competitive pay and career opportunities for individuals and couples and Wairoa offers the ideal location to raise a family.

There is an increased emphasis by the Wairoa District Council on economic development, particularly aimed at encouragement of diversification of agribusiness, ecotourism, digital creative industry attraction, and attraction of new and returning residents, has led to an increasingly positive community view of the district's future.

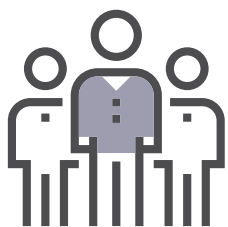
The Council is driving a main street revitalisation project – Te Wairoa E Whanake – Rise Up and Grow Wairoa.

The partnership initiative involves transforming a significant area of the main street focussing on a multi-functional connected town centre that celebrates Wairoa's unique heritage and culture and champions the Wairoa River.

The development includes a street food café hospitality pod, an indoor/outdoor courtyard area, and three businesses offering a mix of hospitality and retail.



Wairoa Key Figures



9,040

POPULATION 2021

♂ **50%**

MALE

♀ **50%**

FEMALE



66%

SCHOOL LEAVERS
ATTAINED NCEA
LEVEL 2 OR ABOVE

In 2020

14

SCHOOLS



966

BUSINESSES 2021



3,376

FILLED JOBS 2021



5,350

WORKING AGE
POPULATION (15-64)
61.4% of total population
in 2021



6.8%

ANNUAL AVERAGE
UNEMPLOYMENT
RATE

March 2022

\$86,072

MEAN ANNUAL
HOUSEHOLD INCOME
For 2021



\$304

AVERAGE WEEKLY RENT
Year to March 2022

\$406,110

AVERAGE HOUSE VALUE
Year to March 2022



AGE DISTRIBUTION 2021

● 0 - 14 23.0%
● 15 - 24 11.9%
● 25 - 64 47.0%
● 65+ 18.0%

EMPLOYMENT BY SKILL
LEVEL 2021



- **HIGHLY SKILLED - 38.3%**
(Degree or higher. Level 1 ANZSCO)
- **SKILLED - 8.8%**
(Registered Diploma. Level 2 ANZSCO)
- **SEMI SKILLED - 11.0%**
(Tertiary Certificate. Level 3 ANZSCO)
- **LOW SKILLED - 41.9%**
(NCEA 2 or 3. Level 3/4 ANZSCO)



Napier

Napier's trademark is its Art Deco architecture built in the 1930s, following the 7.8 magnitude earthquake that destroyed the city in 1931.

Few places in the world have such a broad representation of the Stripped Classical, Spanish Mission, and Art Deco styles within such a confined area, which is why the city has deservedly become known as the Art Deco Capital.

It also explains why aficionados from around the globe descend on Napier every February with their cars, costumes, and other accoutrements, for Art Deco Festival – a fun and frivolous celebration of this distinctive period style.

Along its two kilometres of sea frontage, lined with Norfolk Island Pines first planted in 1888, Napier's Marine Parade offers a succession of visitor attractions set within a landscaped stretch of grass, pathways, and gardens. There is the Ocean Spa Complex, the National Aquarium of New Zealand, a Junior Bike Track complete with working traffic lights, Par 2 MiniGolf, places to eat, and plenty of open space for letting off steam.

Marine Parade also features an impressive representation of art installations by well-known artists, including a prominent bronze statue dedicated to Pania of the Reef – a beautiful sea maiden and significant local tipuna (ancestor) of Ahuriri/Napier, whose story of love of a local chief teaches us the cultural importance and environmental significance of the reef which bears her name as a feeding and breeding ground.

Supported by a Mediterranean climate this popular year-round destination boasts a vibrant café culture. For the shopper there are high-street and boutique stores to browse in, as well as antique shops, art galleries, and studios of potters, wood turners and craftsman.

A Napier landmark is Mataruahou, known as Bluff Hill, which is home to many Napier residents and provides views of the town beaches past the newly upgraded airport and out towards Whirinaki. Mataruahou also overlooks the Port of Napier, one of New Zealand's busiest ports and a stopping point for many cruise liners.

Ahuriri

Five minutes by car or an easy ten on the cycle trail, Ahuriri is a seaside port settlement on the north-west side of the Napier hill that has evolved rapidly from being the exclusive domain of mariners and sea dogs to a very cool satellite of Napier with its own unique vibe and a growing list of cafés, bars, restaurants, galleries, apartments, and boutique stores.

Westshore

Westshore is a great spot for a seaside escape with plenty of places to stay. It's within easy walking distance of Westshore Beach which, by the way, is a great spot to stop for fish and chips to enjoy the sunset. The Ahuriri Estuary can be accessed via a boardwalk out across the water for close-up viewing of wading birds and mud dwellers.

Westshore is also on the Hawke's Bay Trails so you can nip along the trails towards Ahuriri for a bite to eat or head the other way towards Bay View for some scenic cycling along the coastline. Bay View has camp grounds, cafés and abundant fruit stalls laden with year round fruit.

Taradale

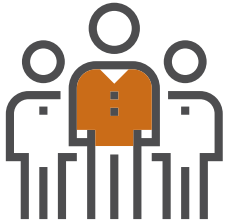
Taradale is a ten-minute drive from downtown Napier. It's a self-contained, residential suburb with its own relaxed, village hub. It's home to the Mission Estate and Church Road wineries, two of Hawke's Bay's oldest wine producers.

The Mission Concert is a local institution that has been bringing international live music acts to Taradale since 1993.





Napier District Key Figures



66,700

POPULATION 2021

♂ **49%**

MALE

♀ **51%**

FEMALE



82.7%

SCHOOL LEAVERS
ATTAINED NCEA
LEVEL 2 OR ABOVE

In 2020

35

SCHOOLS



6,294

BUSINESSES 2021



23,392

FILLED JOBS 2021



40,540

WORKING AGE
POPULATION (15-64)

61.4% of total population
in 2021

\$87,106

MEAN ANNUAL
HOUSEHOLD INCOME
For 2021



3.1%

ANNUAL AVERAGE
UNEMPLOYMENT
RATE

March 2022



\$501

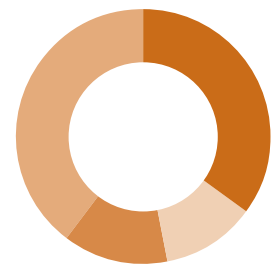
AVERAGE WEEKLY RENT
Year to March 2022

\$894,389

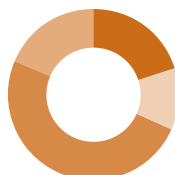
AVERAGE HOUSE VALUE
Year to March 2022



EMPLOYMENT BY SKILL
LEVEL 2021



- **HIGHLY SKILLED - 34.1%**
(Degree or higher. Level 1 ANZSCO)
- **SKILLED - 14.1%**
(Registered Diploma. Level 2 ANZSCO)
- **SEMI SKILLED - 14.6%**
(Tertiary Certificate. Level 3 ANZSCO)
- **LOW SKILLED - 37.3%**
(NCEA 2 or 3. Level 3/4 ANZSCO)



AGE DISTRIBUTION 2021

- 0 - 14 18.8%
- 15 - 24 11.3%
- 25 - 64 49.5%
- 65+ 20.4%

Hastings is a connected district with a range of industry, talent, and lifestyle opportunities where the thinkers and doers thrive. Open space for head space ensures opportunities for innovation. A base where businesses deliver products and services across the globe.





Hastings

Covering 5,229 km² Hastings is a large varied district, high speed fibre keeps us connected, and transport links to the rest of the country (and the world) ensure efficient supply chains for products.

The main urban areas of Hastings central, Havelock North, Flaxmere and Clive, as well as a myriad of smaller coastal and rural settlements provide homes for business as well as a diverse, skilled and stable workforce.

Businesses in Hastings have a variety of dedicated spaces to thrive, these range from industrial parks to vibrant business districts

Hastings city is a vibrant business hub, housing a variety of businesses and industries such as professional services, call centres, regional head office, retail and hospitality.

The city's central North Island location is a real drawcard for businesses looking to relocate, with Kiwibank relocating their call centre and financial services and hundreds of staff from Wellington to Hastings.

Havelock North is a boutique village just a stone's throw from Hastings city. Its charming village setting and close proximity to high-end retail, hospitality and many of the region's wineries, means that many businesses choose to establish themselves in Havelock North.

Lifestyle

Hastings District is the centre for all things wine and food. It covers a vast and scenic area boasting fabulous produce, traditional Farmers Markets and some of the New Zealand's finest wineries.

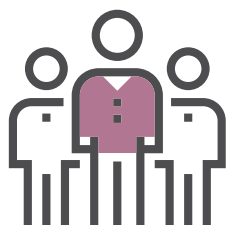
Shop and dine in the village of Havelock North and the stunning Spanish Mission city of Hastings. The areas of Te Awanga, Haumoana and Clifton are well worth a day excursion, as are the beautiful white sandy beaches of Waimārama and Ocean Beach.

Stunning landscape scenery includes Te Mata Peak and the dramatic Cape Kidnappers, home of the world's largest mainland gannet colony and one of the top 50 golf courses in the world.

The Hawke's Bay Cycle Trails are a well-used alternative for exploration of the outlying district by locals and visitors, and have fast become a reason in themselves to visit the area since construction began in 2003.

Some must do's when you are in Hastings include wine tastings in one of the 65 wineries found in the district, walk to the top of Te Mata Peak, a day in Havelock North, bike on one of the many trails, follow the Art Trail and have an ice cream at Rush Munro's, the oldest ice creamery in New Zealand. For those wanting to cool off in the summer sun, then a visit to Splash Planet waterpark is a great idea. Located in over 6.5 hectares of subtropical gardens, this theme park is a whole day's fun with many rides and attractions to keep all the family happy.

Hastings District Key Figures



90,100

POPULATION 2021

♂ 49%

MALE

♀ 51%

FEMALE



80.5%

SCHOOL LEAVERS
ATTAINED NCEA
LEVEL 2 OR ABOVE

In 2020

58

SCHOOLS



10,233

BUSINESSES 2021



47,976

FILLED JOBS 2021



56,350

WORKING AGE
POPULATION (15-64)

61.4% of total population
in 2021



2.9%

ANNUAL AVERAGE
UNEMPLOYMENT
RATE

March 2022

\$115,486

MEAN ANNUAL
HOUSEHOLD INCOME
For 2021



\$495

AVERAGE WEEKLY RENT

Year to March 2022

\$881,628

AVERAGE HOUSE VALUE

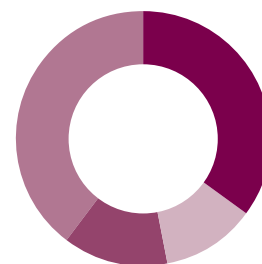
Year to March 2022



AGE DISTRIBUTION 2021

● 0 - 14 20.2%
● 15 - 24 12.0%
● 25 - 64 50.6%
● 65+ 17.2%

EMPLOYMENT BY SKILL
LEVEL 2021



● HIGHLY SKILLED - 35.5%
(Degree or higher. Level 1 ANZSCO)
● SKILLED - 11.3%
(Registered Diploma. Level 2 ANZSCO)
● SEMI SKILLED - 12.6%
(Tertiary Certificate. Level 3 ANZSCO)
● LOW SKILLED - 40.5%
(NCEA 2 or 3. Level 3/4 ANZSCO)

Hastings has dedicated industrial parks where industry thrives.

Irongate Industrial Zone

- Large land area (118 hectares), average lot size of one hectare, minimum 5,000m²
- Dry industries (no trade waste access)
- Sewer and water connection infrastructure ready for connection
- Short and longer term use
- Adjacent to the expressway providing excellent access to northern and southern routes
- Roading improvements continuing with the construction of a new roundabout
- Types of industry: wood product manufacturing, textile production, broad metal product based manufacturing, pack house and cold-storage, logistics, warehousing and distribution

Example tenants: Sunfruit Orchards Limited, NZL Transport, The Carr Group, Rockit Global Ltd, TUMU Timbers, Stephenson Transport Limited, ACME Supplies

Ōmāhu Industrial Zone

- 65 hectares of new general industrial land, Minimum lot sizes 1,000m² – 2,000m²
- New water and wastewater services (no trade waste access)
- Easy access to expressway
- Wide road frontage options ideal for businesses needing a higher profile such as machinery/equipment sales or hire
- Roading improvements scheduled with two new roundabouts

Example tenants: McCain, Greenmount Foods, Bostock New Zealand, Furnware, Metalcraft Roofing, Hustler, Hydralada, Fletcher Steel, Downer, ERL/ MELO, Freshmax

Whakatū Industrial Zone

- 60 hectares
- Suited to wet processing industries as it has capacity for large trade waste
- Options to utilise rail and easy access to road transport
- Napier Port only 18kms away, development of an Inland Port is also currently being investigated

Example tenants: Silver Fern Farms, T&G, Apollo Beverages

The Tōmoana Food Hub

- 22.5 hectares
- Trade waste access zone and can connect to wet industry operations
- Specifically designed to meet the needs of food businesses, zoned to locate any business operating in food industry
- Options to design, build and lease or purchase available
- 18kms to Napier Port
- Potential sites adjacent to Foodeast the Hawke's Bay Food Innovation Park

Example tenants: Jamestrong Precision Packaging, Miracle Water, Fonterra



Central Hawke's Bay

Situated a short drive south of Napier and Hastings, Central Hawke's Bay borders the rolling foothills of the Ruahine Ranges.

Business in Central Hawke's Bay is Thriving!

With a thriving economy, large housing developments, six unique beaches with surfing, fishing and diving spots, a number of walking and cycling trails, golf courses, wineries, hunting, an incredible number of historic homesteads and so much more - there are plenty of reasons to consider living here.

With agricultural activity alone making up on 30% of Central Hawke's Bay's total GDP, and the activity remaining the Districts primary employment sector – the benefits of agriculture remain at the heart of the District.

Central Hawke's Bay boasts prime agricultural land suited to a wide mix of Agri-business. From flat country suited to dairy farms, to rolling country suited to sheep, beef, deer and goats, the region is internationally respected for its primary sector leadership. In the last 20 years, traditional farming has diversified into cropping, dairy farming, viticulture, vegetable and pip fruit production.

Central Hawke's Bay is well placed geographically to allow businesses to carry out work from Napier to Palmerston North and surrounding areas. Transport links for Central Hawke's Bay are excellent with State Highway 2 providing an easy road link to Napier Port and Hawke's Bay Airport to the north and Palmerston North to the west. The main railway line operates through Waipukurau from Wellington, via Palmerston North, to Napier and back.

Central Hawke's Bay boasts two colleges and 18 primary schools, along with numerous kindergartens and childcare facilities. Eastern Institute of Technology (EIT) has a campus based in the heart of Waipukurau and offers a diverse range of courses.

Full medical services are available with the TukiTuki Medical Centre, a physio and specialist care including acupuncture, chiropractor, osteopath with the Hawke's Bay Hospital located in Hastings offering all major health services.

And, compared to other regions in NZ, our house and land prices remain competitive with 1,700 new homes forecast by 2031.

Waipukurau is the biggest township and the agricultural hub of Central Hawke's Bay. The vibrant main street has a great selection of local shops and cafés. Te Huinga Wai - The Knowledge and Learning Hub offers a community hub for people, providers and businesses to take advantage of a wide range of services from AA and Council Services to meeting rooms and a space to work remotely. Within the township there are two gyms, an indoor swimming complex and yoga and pilates classes available.

Waipawa is just a five-minute drive (or a twenty-minute bike ride on the new cycleway) northeast of Waipukurau and is home to the Central Hawke's Bay Museum and many historical buildings. The main street is a bustling community of local shops and cafés as many who are passing through stop to take in all that it offers. It is also home to some of Hawke's Bay's best rainbow and brown trout fishing spots.





Lifestyle

Tourism is thriving with Nga Ara Tipuna, the Tukituki Trails and the hugely successful Spring Fling which brings thousands of visitors to the district and region in September and October each year. These activities boost the local economy by bringing new people to not only Central Hawke's Bay but Hawke's Bay.

Nga Ara Tipuna celebrates Central Hawke's Bay culture and heritage by offering a story-telling journey through ancient pā and wetlands, visitors and locals can visit the site of Pukekaihou Pā, once a thriving Māori settlement or use their mobile phone to take a driving tour of seven more sites of cultural and natural significance around Waipukurau and Takapau.

Central Hawke's Bay is renowned for its beautiful beaches and scenic reserves. Te Angiangi Marine Reserve, a reef running from Blackhead Beach to Aramoana, provides a great family day out with rock pools and sea life to explore. Further along the coast, you'll discover Te Paerahi Beach, Pōrangahau's main beach front, that is home to a huge stretch of white sand, great for exploring on foot or horseback and is famed for its superb diving and fishing. The home of the World's longest place names is just six kilometres east of the township.

For the sporting types, CHB has one of the largest cycling clubs in the country and there is a great network of limestone trails and a perfectly carved mountain bike park to explore. The Tukituki Trails hugs the Tukituki River with unique views of countryside and riverside, our Flemington Polo team is internationally known, and the Patangata Claybird Shooting Club competes against the best nationally.



Central Hawke's Bay Key Figures



15,600

POPULATION 2021

♂ 50%

MALE

♀ 50%

FEMALE



69.4%

SCHOOL LEAVERS
ATTAINED NCEA
LEVEL 2 OR ABOVE

In 2020

18

SCHOOLS



2,283

BUSINESSES 2021



6,660

FILLED JOBS 2021



9,150

WORKING AGE
POPULATION (15-64)
61.4% of total population
in 2021



2.4%

ANNUAL AVERAGE
UNEMPLOYMENT
RATE

March 2022

\$98,040

MEAN ANNUAL
HOUSEHOLD INCOME
For 2021



\$368

AVERAGE WEEKLY RENT
Year to March 2022

\$662,874

AVERAGE HOUSE VALUE
Year to March 2022



AGE DISTRIBUTION 2021

0 - 14	20.4%
15 - 24	9.7%
25 - 64	49.0%
65+	21.0%

EMPLOYMENT BY SKILL
LEVEL 2021



- HIGHLY SKILLED - 35.5%**
(Degree or higher. Level 1 ANZSCO)
- SKILLED - 8.5%**
(Registered Diploma. Level 2 ANZSCO)
- SEMI SKILLED - 12.7%**
(Tertiary Certificate. Level 3 ANZSCO)
- LOW SKILLED - 43.2%**
(NCEA 2 or 3. Level 3/4 ANZSCO)

Quality Roding & Services

Enjoy work-life balance in Wairoa

Boasting a warm climate and easy-going lifestyle, award-winning Quality Roding and Services in Wairoa is successfully attracting people who want the joy of a work-life balance.

It's a sun-dappled autumn evening and Mike Wilson's youngest children galumph amongst small lime trees as the sun throws fingers of light between the furrows.

Back in 2018 the Wairoa-based Wilson family planted nearly 800 lime trees in their bottom paddock – a hands-on activity that everyone in the family helped with.

Mike says he and his wife Grey often savour the life they've created for their children.

"We reckon we've cracked it. Working at QRS, weekends with the family, playing outside, it's the reason we returned," says the 42-year-old construction manager with Quality Roding and Services.

Civil infrastructure company Quality Roding and Services or QRS is owned by Wairoa District Council. It's a strong successful company helping grow the Wairoa community.

Specialising in civil contracting, construction, infrastructure, temporary traffic management and roading, it was announced 2020's Hawke's Bay Chamber of Commerce Supreme Business. In 2021 it went on to win the Civil Contractors Hawke's Bay East Coast Construction Award for projects with a value of between \$1m and \$3m for its repair of a complex sea wall.

Chief executive Jeremy Harker is proud to head up a company that so often punches above its weight.

"It's important to our board and leadership team that the company be recognised for a job well done but we must also be profitable for our owner."

Not only that, we aim to be socially accountable to ourselves, our stakeholders and the public, says Mr Harker. "We want to make sure we're operating in ways that enhance Wairoa. It's a privilege to be able to employ 85 locals and see them thrive and flourish."

Mike Wilson couldn't agree more. He grew up on a sheep and beef farm near Wairoa. While living in the Solomon Islands he and Grey decided that rural Kiwi living was their dream for the growing family.

"By moving to Wairoa, we could afford the lifestyle we wanted."

The couple bought a 3.3ha lifestyle block with views to Te Urewera. They built their house on a hill and planted the citrus below.

"Limes for The Limery – it's great to be able to tie in with a successful Wairoa business," says Mike.

Like many professionals living in Wairoa, Grey, originally from Vermont, works remotely. She's an environmental planner for a sustainable infrastructure company doing work New Zealand-wide.

"We're well connected to the rest of New Zealand but get to enjoy the relaxed lifestyle and fantastic weather that living in northern Hawke's Bay brings," says Mike.





Wairoa's Award-Winning Beauty Clinic

Living in a small town does not stop Wairoa beauty therapy clinic Beauty Antix from delivering a world-class top-level service.

Clinic owner/operator Amber Forrest has been showered with top national beauty industry awards over the years and in 2021 was named the supreme winner of the NZI Rural Women NZ Business Awards.

"It's always great to have our business recognised but it was extra special to be recognised for our impact on Wairoa as a rural community," says Amber

"Wairoa epitomises a rural community and at Beauty Antix we are always trying to meet that rural need in recognition that farming is the backbone of our community."

Amber's award-winning business is immersed in the diversity of its clientele and community. It provides a wide range of expert and professional treatments.

The Beauty Antix motto is Exceeding Expectation with Expertise. It is an environment that is open, inclusive, and respectful to all customers and serves its community in a uniquely holistic way.

Amber has been a beauty therapist for 27-years. She originally established a salon within a local pharmacy and around nine-years ago launched Beauty Antix.

Early in 2021, Beauty Antix was also awarded the national title of New Zealand Beauty Clinic of the Year. The high achieving business was presented with the top award at the New Zealand Beauty Industry awards going head-to-head in the finals with two other salons, one from Auckland and one from Christchurch.

Amber credited her win to her staff and the Wairoa community. "There is always a lot of hard work that goes into meet the award's criteria and being recognised at a national level across the entirety of the beauty industry and putting Wairoa on the stage and under the spotlight makes it all worthwhile.

"Being recognised nationally is a tribute to all those people who support our business and especially our team who help make this possible. Wins like this for a small business from the regions is humbling. We are ecstatic and beyond proud."

Amber's philosophy is to treat every client equally and offer beauty and wellness services for all walks of life. She believes every client should receive just as good a service in Wairoa as they would in Auckland.

Amber was also a finalist for top beauty therapist at the National Beauty Industry awards and in 2018 was awarded Best Business in the North Island region in the New Zealand Māori Business awards.



Beauty AntiX exceeding expectations with expertise

Beauty AntiX

ceeding
pectations with
pertise



Beauty Antix endorses Dermalogica, the internationally renowned skin health technique and treatment brand and number one professional skin care system in the world. Amber has reached the highest education level Dermalogica offers having received the NZ best skin therapist award.

Amber is one of a handful of skin expert therapists in New Zealand and her salon is recognised as one of 17 Platinum skin centres in the country and one of 37 postgraduate skin and body therapy training locations worldwide.

She is also a Gold Account holder with Pure Fiji, her premium spa and body range that is offered in spas across the world.

Amber's future vision is to extend on the work she does providing career paths for young women, particularly Māori, through a nationally recognised Beauty and Wellness Training facility.

"We have the ability to expand and train and prep young girls to become work ready in the beauty industry, and through our status and connections, place them at Platinum clinics around the country so they can further develop their skills."

"It's about community inclusiveness and strengthening young women so they can work in a sustainable way in the beauty industry. This is about a future where we can showcase Wairoa and the beauty treatments."



“They’re capturing the benefits of regional living that locals have always appreciated, while staying plugged into the fast pace of the technical industry we compete in.”

Now NZ Ltd.

The Hawke's Bay telco that puts customer service above all else has a secret weapon fuelling its growth

Since 2012 there's been an option many New Zealanders haven't been aware of – they can get their telecommunications services for their home and business from a player outside of Auckland. Surprising but true.

Now NZ, the Napier-based telco was founded on the belief that New Zealanders deserve better from an industry that's spent decades conditioning them to expect very little from their telecommunications provider.

Fast forward 10 years and Founder & CEO Hamish White, a Hawke's Bay local, beams with pride looking back over what's been achieved in the decade since he set up shop in Napier. Not only has Now made a dent in the notion that service from a telco needs to be anything but exceptional. He now drives a team of around 80 staff (split across Napier HQ, and a new CHCH call centre) who operate their own national broadband network with over 23,000 customers.

“There's something magical going on here without a doubt – our staff love where they work. Providing a variety of specialist & highly technical roles throughout the company, that are often only found in the big centres, is a regional rarity and it's crucial for attracting top talent to the Bay.”

Most notably Now consistently outperforms NZ's best-known corporate brands when it comes to customer service, value, network performance, and many other measures. Repeatedly winning coveted industry awards from Canstar, NZ Compare, TUANZ, and more.

But Mr. White knows they're just getting started – the industry is still lagging behind the leading position Now has taken, putting service back at the forefront of what should be the norm for the category. His team is doggedly committed to maintaining their lead.

Surrounded by no shortage of leisure activities, and the wineries and restaurants of New Zealand's fruit bowl make Hawke's Bay a real gem. Often reserved for short tourist visits or summer holidays White describes witnessing an influx of people relocating from the main metros to Napier & Hastings to join those who already know the Bay has something special going on.

“They're capturing the benefits of regional living that locals have always appreciated, while staying plugged into the fast pace of the technical industry we compete in.”

Now NZ is on a major growth curve – currently undertaking a multi-million-dollar network, and core systems, upgrade and continued staff expansion, driven by strong customer growth in both business and residential segments across New Zealand.





Kiwibank

Creating big city jobs in Hastings. In a post-COVID world, different ways of working are becoming the norm but it's nothing new for Kiwibank's regional office in Hastings.

Kiwibank set up its Hastings office in 2014, prompted by a desire to ensure it could be resilient should an emergency event affect operations at any one site.

Customer experience manager Mairin Gallagher said the move proved its value when the Kaikoura earthquake struck in 2016, and the Hastings location had also proven to be a drawcard workplace for people both local and from outside the region.

Today, the office on the corner of Market Street and Queen Street houses about 160 staff, 90 to 100 of those in the contact centre as well as newly added specialist teams in lending, customer verification, business banking and a small contact centre for Kiwi Wealth.

"The world is changing, and that has accelerated with COVID with more people working remotely," says Mairin.

"Since we opened we attracted people from the bigger centres like Auckland and Wellington who the bank can support working here."

"This area is a destination for people who want to balance being able to live, work and play, as well as continue their career progression in a way that they traditionally would have only been able to do in the larger centres."

While it attracts staff from out of the region, Kiwibank primarily employs local people, depending on their skill set, she says.

"And it's getting easier – people are coming back to live here and bringing skills with them that would have been hard to recruit for locally previously."

"We also have entry roles, which are a massive opportunity locally for career progression in financial services."

Over the last year and a half learning pathways have been created to help people to move into different roles, and the organisation has been meeting the challenge of catering to a world that operates beyond the regular nine-to-five working hours.

"For contact centre work in particular that means offering shifts that allow people who want to work evenings and maybe spend their days with whānau or undertaking study."

The overarching aim was to enable people to work for a large Kiwi organisation supportive of their lifestyle, study and family situations, right here in Hastings.



New Zealand Frost Fans Ltd

Award-winning company New Zealand Frost Fans (NZFF) manufactures FrostBoss® Frost Fans that are used by growers to protect their crops against frost damage and cold injury.

Originally founded as Hawke's Bay Wind Machines Ltd in 1995 importing wind machines from the United States, it started manufacturing in New Zealand in 2007 and sells directly to growers through its own companies in New Zealand and Australia and through independent distributors in Bulgaria, Canada, Chile, France, Hungary, Israel, Italy, Spain, Portugal and Turkey.

In 2018 the factory was expanded, and currently work is underway for a new Blade Factory at its Ōmahu Road site where it manufactures its Frost Fans.

Chief executive Andrew Priest said the new factory would significantly increase the company's capacity to service growth in new markets, using state-of-the-art robotic manufacturing methods.

NZFF employs over 80 people globally, and since 2012 has grown from \$9 million revenue (38 per cent export) to over \$50 million in 2021 (80 per cent export).

Mr Priest said having its base in Hawke's Bay made sense.

"We have a fantastic workforce and the Bay is a great place to live. Many Ōmahu Road neighbours supply inputs such as machining, engineering, laser cutting and electrical components."

Across the wider Hawke's Bay region, he said the company made use of local speciality services such as galvanising, and fabrication of tanks and engine cabinets.

"For exports we ship the machines in 40-foot containers through the nearby Port of Napier. And of course we are close to our Hawke's Bay customer base of growers as well as having service centres in the Bay of Plenty, Marlborough and Central Otago to provide local support for those growing regions."

Last year NZ Frost Fans was named ExportNZ Hawke's Bay ASB Exporter of the Year, and also won the T&G Global Best Established Award. This year the company was proud to be a finalist in the NZTE NZIBA Awards in the Best Established Business category.



Land Use Diversification and Agriculture shines in Central Hawke's Bay

Agricultural activity alone makes up 30% of Central Hawke's Bay's total GDP, and is the Districts primary employment sector – the benefits of agriculture remain at the heart of the District.

With the Ruataniwha Plains – between Waipawa and the Ruahine Ranges, recognised as versatile land of regional, if not national significance Central Hawke's Bay plays a pivotal contribution to the Hawke's Bay reputation as the largest horticultural production region in New Zealand.

In recent times a shift in focus from a volume-to-value agricultural economy, has lead to land diversification to create more sustainable land use in the face of climate change and competing demands on the Districts natural assets.

The White Family Farm of Ludlow Estate, producers of Kanapu Hemp and food products are an outstanding example of this land use diversification story, producing artisan hemp foods, grown from the fertile soils of the rich soils of the plains in Ōtāne. Having farmed the Ōtāne Basin for over 150 years, the White Family and Kanapu Hemp typify the diversification and shift from "volume to value" production possible in the District.

Simon White is the Farm Operations Manager and alongside his team at Kanapu Hempery they take premium New Zealand grown hemp seed and transform it into pure nutrition. It connects whanau and communities through whenua and kai by an intentional fusion of matakura Māori and contemporary technology. They strive to ensure the mauri of the soil remains intact and is even healthier for the next crop that follows.

There is a growing interest in hemp and its many uses including fibre, seed, protein and milk. There are significant environmental benefits from growing hemp and water requirements are relatively low.

Although there are limited processing facilities available in New Zealand, very few export markets established currently and some regulatory issues remain, this area of interest is up and coming in the future of Central Hawke's Bay.





Useful contacts

If you require assistance the following list is a great place to start.

District Council Economic Development

Central Hawke's Bay District Council

28 - 32 Ruataniwha Street, Waipawa 4210
06 857 8060
www.chbdc.govt.nz

Hastings District Council

207 Lyndon Road East, Hastings 4122
06 871 5000
www.hastingsdc.govt.nz

Hawke's Bay Regional Council

159 Dalton Street, Napier 4110
0800 108 838
www.hbrc.govt.nz

Napier City Council

215 Hastings Street, Napier South, Napier 4110
06 835 7579
www.napier.govt.nz

Wairoa District Council

Coronation Square, 97 Queen Street, Wairoa 4108
06 838 7309
www.wairoadc.govt.nz

Business

Callaghan Innovation

06 650 1711
www.callaghaninnovation.govt.nz

Export New Zealand

06 835 2528
www.exportnz.org.nz

Hawke's Bay Airport

Main North Road, Napier Airport, Napier 4110
06 834 0742
www.hawkesbay-airport.co.nz
Commercial Manager

Hawke's Bay Business Hub

36 Bridge Street, Ahuriri, Napier 4110
06 650 1711
www.hbbusinesshub.co.nz

Hawke's Bay Chamber of Commerce

36 Bridge Street, Ahuriri, Napier 4110
06-876 5938
www.hawkesbaychamber.co.nz

Napier Port

Breakwater Road, Napier 4140
06 833 4495
www.napierport.co.nz
Business Development Manager

New Zealand Trade and Enterprise

0800 555 888
www.nzte.govt.nz

Regional Business Partners

06 650 1711
www.regionalbusinesspartners.co.nz

The Icehouse

0800 ICEHOUSE
www.theicehouse.co.nz

Publication Disclaimer

Napier and Hastings, Central Hawke's Bay and Wairoa District Councils, Hawke's Bay Regional Council and Business Hawke's Bay in preparing this publication consider its sources reliable and verifies as much data as possible. However, reporting inaccuracies can occur, consequently readers using this information do so at their own risk.

This publication is made freely available with the understanding that the publisher is not rendering legal or financial advice. Although persons and companies mentioned herein are believed to be reputable, neither Napier and Hastings, Central Hawke's Bay and Wairoa District Councils, Hawke's Bay Regional Council and Business Hawke's Bay, nor any of its employees or officers accept any responsibility whatsoever for such persons' and companies' activities.

While every effort has been made to ensure that information is correct at the time of publication of this document, Napier and Hastings, Central Hawke's Bay and Wairoa District Councils, Hawke's Bay Regional Council and Business Hawke's Bay cannot be held responsible for the outcome of any action or decision based on the information contained in this publication, or the Great Things Grow Here™ web site. The publishers or authors do not give any warranty for the completeness or accuracy for this publication's content, explanation or opinion. It is advisable that prospective investors consult their legal advisors and/or financial investor/s prior to following or pursuing any business opportunity or entering into any investments. Nothing in this publication or the Great Things Grow Here™ website should be taken as a recommendation to buy, sell, hold or trade any listed securities, or other financial instrument or asset.

© Napier and Hastings, Central Hawke's Bay and Wairoa District Councils, Hawke's Bay Regional Council and Business Hawke's Bay.

No part of this publication and/or website may be reproduced, stored in a retrieval system or transmitted in any form without prior written permission of the Publisher. Permission is only deemed valid if approval is in writing. Napier and Hastings, Central Hawke's Bay and Wairoa District Councils, Hawke's Bay Regional Council and Business Hawke's Bay retains all rights to contributions, text, infographics and images, unless previously agreed to in writing.

GREAT THINGS GROW HERE™
HAWKE'S BAY NEW ZEALAND

© 2022 by Great Things Grow Here™

This document is private and confidential. It is the property and remains the copyright of Napier and Hastings, Central Hawke's Bay and Wairoa District Councils, Hawke's Bay Regional Council and Business Hawke's Bay. Its contents, written and illustrated may not be reproduced in any form whatsoever without the written permission of the Napier and Hastings District Councils, Economic Development Departments.

003552_October_2022



